

PR338 WOMEN'S COTTON RICH OXFORD STRIPES SHIRT**MAIN FEATURES**135 g/m²**Fabric**

60% Cotton, 40% Polyester Oxford Stripe

135gsm

Features

Button-down collar on the underside

Contrast colour on inner neckband and cuff

Two-button cuff and single button sleeve guard

Curved hem

Bust and back darts

Modern fit

Easy care

Suggested Decoration:

Embroidery, Heat transfer, Screen printing

Certifications:**Country Of Origin:**

Bangladesh

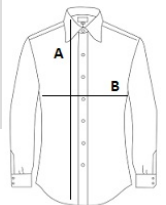


2025 : p. 95

2024 : p. 282

**SIZE SPECIFICATION (CM)**

	XS	S	M	L	XL	2XL
Pcs./	24	24	24	24	24	24
Body Length (A)		79	80	80	81	81
Chest Width (B)		54	58	62	66	70

**COLORS:**
 White/Navvy
 White/Grey
 White/Oxford Blue