

**PR604 'VITALITY' HEALTHCARE TUNIC** **Outlet****MAIN FEATURES**195 g/m<sup>2</sup>**Fabric**

65% Polyester, 35% Cotton Twill

195gsm

**Features**

Rounded collar styling with contrast piped edge

Covered front zip fastening

Popper fastening above zip

Curved side pockets with contrast piped edge - 2 PU lined pen pockets

Side and back pleats for fitted styling

Contrast piped detail on sleeve cuff

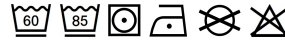
Side slits

**Suggested Decoration:**

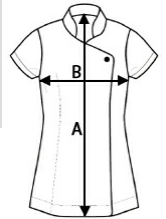
Embroidery, Heat transfer, Screen printing

**Country Of Origin:**

Bangladesh

**SIZE SPECIFICATION (CM)**

	<b>XS</b>	<b>S</b>	<b>M</b>	<b>L</b>	<b>XL</b>	<b>2XL</b>	<b>3XL</b>	<b>4XL</b>	<b>5XL</b>
<b>Pcs./</b>	24	24	24	24	24	24	24	24	24
<b>Body Length (A)</b>	78	78.50	79	79.50	80	80.50	81	81.50	82
<b>Chest Width (B)</b>	45.50	48	50.50	53	55.50	58.50	61.50	64.50	67.50

**COLORS:**

■ Royal/White
 ■ White/Navy