

PR691 'IVY' BEAUTY AND SPA TUNIC **Outlet**

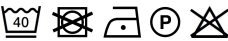


MAIN FEATURES

- 185 g/m<sup>2</sup>
- Fabric**
- 100% Polyester plain weave
- 185gsm
- Features**
- Beauty and Spa tunic with Panel detail
- Black contrast panel detail around front neck line
- Princess seams and bust darts for flattering fit
- Side vents
- Back zip fastening
- Short sleeves
- Easycare
- Suggested Decoration:**
- Embroidery, Heat transfer, Screen printing
- Certifications:**

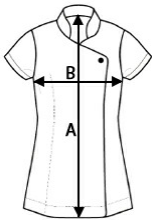


**Country Of Origin:**  
China



SIZE SPECIFICATION (CM)

	XXS	XS	S	M	L	XL	2XL	3XL	4XL	5XL
Pcs./	12	12	12	12	12	12	12	12	12	12
Body Length (A)	70	71	72	72	73	74	75	76	77	78
Chest Width (B)	44,5	47	49,5	52	54,5	57	60	63	66	69



COLORS:

- Black/Hot Pink Black/Purple Black/Strawberry Red Black/Turquoise