

**RETRA454 KIDS' STORMFORCE - THERMAL HOODED JACKET** Outlet



**MAIN FEATURES**

60 g/m<sup>2</sup>

**Fabric Information**

- Lightweight Polyamide fabric
- Durable water repellent finish
- Polyester taffeta lining
- Lightweight Thermo-Guard insulation
- 100 GSM body insulation wadding weight

**Special Features**

- Easily compressible
- Inner zip guard
- Stretch binding to hood opening, cuffs and hem
- 2 zipped lower pockets
- Insulated grown on hood
- Reflective trim at lower back
- Concealed internal side seam zipped embroidery access

**Suggested Decoration:**

Embroidery, Heat transfer, Screen printing

**Country Of Origin:**

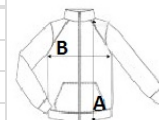
Bangladesh

Wash dark colours separately



**SIZE SPECIFICATION (CM)**

	3/4	5/6	7/8	9/10	11/12	32	34
<b>Pcs./</b>	8	8	8	8	8	8	8
<b>Body Length (A)</b>	47	49.50	52	56	60	64	68
<b>Chest Width (B)</b>	38	40.50	43	45.50	48	50.50	53
<b>Sleeve Length (C)</b>	39	42.50	47	51.50	56	60.50	65



**COLORS:**

- Black
- Classic Red
- Navy
- Royal Blue