



37 g/m<sup>2</sup> 100% Polyamide Pocket Tear-Away Label

2025 : p. 355

MAIN FEATURES:

**Fabric Information**

- 100% Polyamide with water repellent and cire finish
- Durable water repellent finish
- Warmloft down-touch performance technology insulation
- High loft polyester insulation - 60gsm
- Polyester taffeta lining

**Special Features**

- Inner zip guard
- 2 zipped lower pockets
- This product has no external logo branding
- Stretch binding to cuffs and hem

Wash dark colours separately

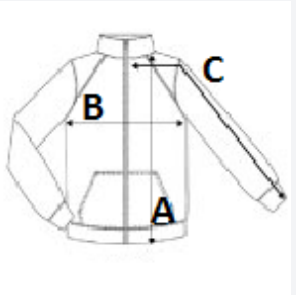
TARIFF CODE: **62024010**

SUGGESTED DECORATION  
Embroidery, Heat transfer, Screen printing

COUNTRY OF ORIGIN  
Myanmar

SIZE SPECIFICATION (CM)

	S	M	L	XL	2XL	3XL
Pcs./📦	8	8	8	8	8	8
Body Length (A)	68.00	68.00	70,5	70,5	73.00	73.00
Chest Width (B)	50.00	52.00	54,5	57.00	61.00	63.00
Sleeve Length (C)	64.00	64,5	65.00	65,5	66.00	66,5



COLORS:

- Black/Black
- Navy/French Blue
- Grey Marl/Black
- Seal Grey/Black