

RETRA529 TOURER HYBRID JACKET



REGATTA
PROFESSIONAL

WARMLOFT

EXTOLSTRETCH

MAIN FEATURES

37 g/m²

Fabric Information

- 100% polyamide with water repellent and cire finish
- Extol stretch side panels
- Durable water repellent finish to body
- Synthetic Warmloft down-touch water repellent insulation

Special Features

- Easily compressible
- Lightweight fill
- Inner zip guard
- 2 zipped lower pockets
- Stretch binding to hood opening, cuffs and hem
- This product has no external logo branding
- Made using recycled materials

Suggested Decoration:

Embroidery, Heat transfer, Screen printing

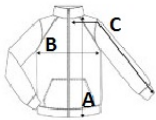
Country Of Origin:

China



SIZE SPECIFICATION (CM)

	S	M	L	XL	2XL	3XL
Pcs./📦	8	8	8	8	8	8
Body Length (A)	73	73	75,5	75,5	78	78
Chest Width (B)	50	54	58	62	67	71
Sleeve Length (C)	67	68	69	70	71	72



COLORS:

Seal Grey/Black