



Polyester / Elastane

Pocket

Tear-Away Label

MAIN FEATURES:

Fabric Information

Polyamide Body Panels

90% Polyester

10% Elastane Power Stretch

Special Features

Polyamide panels to the body

Lightweight recycled warmloft fill

Durable WR finish

Power stretch hood, sleeves and side of the body provides comfort and ease of movement

Ideal for decoration with strategically placed baffles

Running in 5 colours as part of our new Navigate range

2 lower front zipped pockets

Zipped chest pocket



TARIFF CODE: **62014010**

SUGGESTED DECORATION

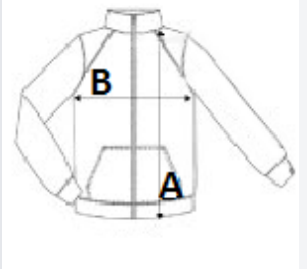
Heat transfer, Screen printing

COUNTRY OF ORIGIN

Myanmar

SIZE SPECIFICATION (CM)

	S	M	L	XL	2XL	3XL
Pcs./📦	8	8	8	8	8	8
Body Length (A)	68,5	71.00	73,5	73,5	76.00	78,5
Chest Width (B)	50.00	54.00	58.00	62.00	67.00	75.00



COLORS:

 Black/Classic Red

 Black/New Royal

 Black/Seal Grey

 Navy/French Blue

 Navy/Seal Grey