

RETRA618 CONTRAST PRINTABLE 3 LAYER SOFTSHELL **Outlet****REGATTA**
PROFESSIONAL

SOFTSHELLXPT

WATERREPELLENT

**MAIN FEATURES**

- 300 g/m²
- Warm backed woven softshell XPT
- Waterproof and breathable
- Printable softshell fabric
- Ideal for screen, transfer and vinyl printing
- 3 layer membrane fabric
- Wind resistant membrane fabric
- ATI durable water repellent finish
- 2 zipped lower pockets
- 1 zipped chest pocket
- Adjustable shockcord hem Inner zip and chin guard

Suggested Decoration:

Embroidery, Flex, Heat transfer, Screen printing

Country Of Origin:

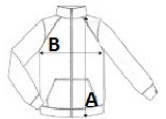
Bangladesh



Wash dark colours separately

**SIZE SPECIFICATION (CM)**

	XXS	XS	S	M	L	XL	2XL	3XL	4XL
Pcs./	16	16	16	16	16	16	16	16	16
Body Length (A)	0	69.50	69.50	12	14.50	74.50	77	77	79.50
Chest Width (B)	0	94	102	110	118	126	136	144	152
Sleeve Length (C)	0	78	79.50	81	82.50	84	85.50	87	88.50

**COLORS:**

Black/Classic Red
 Black/Seal Grey
 Classic Red/Black
 Navy/New royal
 New Royal/Navy
 Seal Grey/Black