

RETRA625 HI-VIS PRO 3 LAYER SOFTSHELL



REGATTA
PROFESSIONAL

HIGH VISIBILITY



SOFTSHELL XPT

WATER REPELLENT

MAIN FEATURES

310 g/m²

Fabric Information

Warm backed woven Softshell XPT waterproof and breathable 3 layer membrane fabric
Breathability rating 10,000g/m²/24 hours

Special Features

- EN ISO 20471:2013/A1:2016 Class 2
- 2 zipped lower pockets
- Adjustable shockcord hem
- Full length zip with inner zip and chin guard
- 1 chest pocket
- Orange colour-way also conforms to RIS-3279/TOM
- ID Reflection - Our angled chevrons allow people to know which way you are facing towards or away from them at a quick glance, increasing safety in low light
- This product has no external logo branding
- Made using recycled materials

Suggested Decoration:

Embroidery, Heat transfer, Screen printing

Country Of Origin:

China



Wash dark colours separately



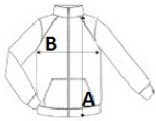
2025 : p. 252

2024 : p. 495



SIZE SPECIFICATION (CM)

	S	M	L	XL	2XL	3XL
Pcs./	16	16	16	16	16	16
Body Length (A)	68	70.50	73	73	75.50	75.50
Chest Width (B)	51	55	59	63	68	72
Sleeve Length (C)	66	67	68	69	70	71



COLORS:

Orange/Navy Yellow/Navy