

RETRA629 ABLAZE WOMEN'S PRINTABLE SOFTSHELL



REGATTA
PROFESSIONAL

SOFTSHELL

WATERREPELLENT

MAIN FEATURES

265 g/m²

Fabric Information

Warm backed woven Softshell

Printable Softshell fabric

Ideal for screen, transfer and vinyl printing

Special Features

Inner zip guard

2 zipped lower pockets

This product has no external logo branding

- Made using recycled materials

Suggested Decoration:

Digital printing (DTF), Embroidery, Flex, Screen printing

Country Of Origin:

Bangladesh



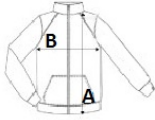
2025 : p. 250

2024 : p. 490



SIZE SPECIFICATION (CM)

	XXS	XS	S	M	L	XL	2XL	3XL	4XL
Pcs./📦	16	16	16	16	16	16	16	16	16
Body Length (A)	0	0	64.50	67	67	69.50	69.50	69.50	0
Chest Width (B)	0	0	49	51	53.50	56	59.75	62.25	0
Sleeve Length (C)	0	0	63.50	64	64.50	65	65.50	66	0



COLORS:

Hot Pink/Black	Magma/Black	White/Light Steel	Black/Black	Black/Classic Red	Classic Red/Black
Dk Spruce/Black	Extreme Green/Black	French Blue/ Navy	Navy/ French Blue	Navy/ Navy	New Royal/Black
Rock Grey/Black	Seal Grey/Black	Vibrant Purple/Black			