

RETRA680 CLASSIC PRINTABLE LIGHTWEIGHT SOFTSHELL



REGATTA
PROFESSIONAL

SOFTSHELL

WATERREPELLENT

MAIN FEATURES

240 g/m²

Fabric Information

Lightweight jersey backed Softshell fabric
Softshell Stretch Light fabric technology
Durable water repellent finish
Wind resistant
Super soft handle
Quick drying
Lightweight and easy to wear

Special Features

2 zipped lower pockets
Made using recycled materials

Suggested Decoration:

Heat transfer, Screen printing

Country Of Origin:

China



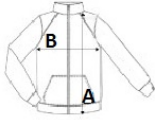
2025 : p. 248

2024 : p. 494







SIZE SPECIFICATION (CM)

	S	M	L	XL	2XL	3XL
Pcs./📦	16	16	16	16	16	16
Body Length (A)	66	68.50	71	71	73.50	73.50
Chest Width (B)	50.50	54.50	58.50	62.50	67.50	71.50
Sleeve Length (C)	64	65	66	67	68	69



COLORS:

 Oxford Blue/Oxford Blue  Seal Grey/Seal Grey  Black/Black  Navy/Navy