

RETRA689 WOMEN'S OCTAGON II PRINTABLE 3 LAYER MEMBRANE SOFTSHELL


REGATTA
 PROFESSIONAL

SOFTSHELL XPT

WATER REPELLENT

MAIN FEATURES

300 g/m²
Fabric Information

Warm backed woven Softshell XPT waterproof and breathable

3 layer membrane fabric

Wind resistant membrane fabric

AtI durable water repellent finish

Special Features

Inner zip guard

2 zipped lower and 1 chest pocket

Adjustable shockcord hem

Shaped fit (women's only)

Made using recycled materials

Suggested Decoration:

Heat transfer, Screen printing

Country Of Origin:

China



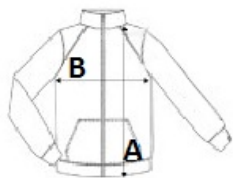
2025: p. 251

2024: p. 492



SIZE SPECIFICATION (CM)

	XS	S	M	L	XL	2XL	3XL	4XL
Pcs./📦	16	16	16	16	16	16	16	16
Body Length (A)	63	65	65	67.50	67.50	70	70	72
Chest Width (B)	47	49	51	53.50	56	59.75	62.25	65
Sleeve Length (C)	61	61.50	62	62.50	63	63.50	64	64.50



COLORS:

Extreme Green/Black	Hot Pink/Black	Majestic Purple/Black	White/Light Steel	Black/Black	Classic Red/Black
Navy/Seal Grey	Oxford Blue/Black	Seal Grey/Black			