

RETRA702 WOMEN'S VENTURER 3 LAYER HOODED PRINTABLE SOFTSHELL JACKET
REGATTA
 PROFESSIONAL

SOFTSHELL XPT

WATER REPELLENT

MAIN FEATURES300 g/m²**Fabric Information**

Warm backed woven Softshell XPT waterproof and breathable 3 layer membrane fabric

Breathability rating 10,000g/m²/24 hours

Wind resistant membrane fabric

Atl durable water repellent finish

Special Features

Detachable hood

2 zipped lower pockets

Zipped chest pocket

Adjustable cuffs

Ideal for screen, transfer and vinyl printing

Made using recycled materials

Country Of Origin:

China

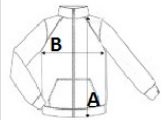


2025 : p. 251

2024 : p. 493

**SIZE SPECIFICATION (CM)**

	8	10	12	14	16	18	20
Pcs./	16	16	16	16	16	16	16
Body Length (A)	0	64.50	67	67	69.50	69.50	69.50
Chest Width (B)	0	49	51	54	56	60	62
Sleeve Length (C)	0	63.50	64	64.50	65	65.50	66

**COLORS:**
 French Blue/Navy
 Black/Classic Red
 Navy/French Blue
 Black/Black
 Navy/Navy
 Seal Grey/Black