

RETRA712 HI-VIS PRO CONTRACT ABLAZE 2 LAYER SOFTSHELL JACKET (CLASS 3)
REGATTA
 PROFESSIONAL


WATER REPELLENT

MAIN FEATURES270 g/m²

Warm backed woven Softshell

Printable Softshell fabric

Certified to EN ISO 20471:2013/A1:2016 Class 3. Orange colour-way also conforms to RIS-3279-TOM

2 zipped lower pockets

Made with recycled content

Zip guard for comfort when worn

ID Reflection - Our angled chevrons allow people to know which way you are facing towards or away

Suggested Decoration:

Embroidery, Heat transfer

Country Of Origin:

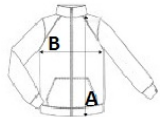
China



2025 : p. 252

**SIZE SPECIFICATION (CM)**

	S	M	L	XL	2XL	3XL	4XL
Pcs./	16	16	16	16	16	16	16
Body Length (A)	66	68.50	71	71	73.50	73.50	76
Chest Width (B)	51	55	59	63	68	72	76

**COLORS:**

Orange

Yellow