

RETRA728 ECO ABLAZE SOFTSHELL JACKET **Outlet**
**REGATTA**  
 PROFESSIONAL

SOFTSHELL

**MAIN FEATURES**270 g/m<sup>2</sup>**Fabric Information**

Polyester 100%

Warm backed woven Softshell

Outer fabric contains recycled polyester yarns

Printable Softshell fabric

Ideal for screen, transfer and vinyl printing

**Special Features**

Inner zip guard

This product has no external logo branding

**Suggested Decoration:**

Embroidery, Heat transfer, Screen printing

**Country Of Origin:**

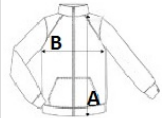
China



2024 : p. 122

**SIZE SPECIFICATION (CM)**

	XS	S	M	L	XL	2XL	3XL	4XL
<b>Pcs./</b>	16	16	16	16	16	16	16	16
<b>Body Length (A)</b>	68	68	70,5	73	73	75,5	75,5	78
<b>Chest Width (B)</b>	47	51	55	59	63	68	72	76
<b>Sleeve Length (C)</b>	65	66	67	68	69	70	71	72

**COLORS:**
Black/Black
French Blue/Navy
Navy/French Blue
Navy/Navy
Seal Grey/Black