

RETRA813 SANDSTORM - SOFTSHELL RIPSTOP BODYWARMER**Outlet**
REGATTA
 PROFESSIONAL


SOFTSHELL

WATERREPELLENT

MAIN FEATURES290 g/m²**Fabric Information**

Hardwearing warm backed woven stretch ripstop Softshell fabric

Durazone polyamide overlays at wear points for added strength and durability

Atl durable water repellent finish

Special Features

Reflective trim to front and back

Inner zip guard

2 zipped lower pockets and 1 zipped chest pocket

Adjustable shockcord hem

Suggested Decoration:

Embroidery, Heat transfer, Screen printing

Country Of Origin:

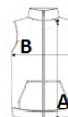
China



Wash dark colours separately

**SIZE SPECIFICATION (CM)**

	S	M	L	XL	2XL	3XL
Pcs./	16	16	16	16	16	16
Body Length (A)	68.50	68.50	71	71	73.50	73.50
Chest Width (B)	50.50	54.50	58.50	62.50	67.50	71.50

**COLORS:**

Black/Black

Seal Grey/Black