



250 g/m² 100% Polyester Tear-Away Label

MAIN FEATURES:

Fabric Information

Polyester 100%
250 series anti-pull Symmetry fleece

Special Features

EN ISO 20471:2013 +A1:2016 Class 2
2 lower pockets
Adjustable drawcord hem
Centre front zip with inner chin guard
Orange colour-way also conforms to RIS-3279/TOM when worn with RIS-3279-TOM Class 2 upper body cloth
ID Reflection - Our angled chevrons allow people to know which way you are facing towards or away from
This product has no external logo branding

Max 25 Washes



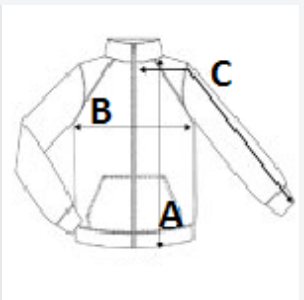
TARIFF CODE: **61103091**

SUGGESTED DECORATION
Embroidery

COUNTRY OF ORIGIN
China

SIZE SPECIFICATION (CM)

	S	M	L	XL	3XL
Pcs./📦	16	16	16	16	16
Body Length (A)	66.00	68,5	71.00	71.00	73,5
Chest Width (B)	49.00	53.00	57.00	61.00	70.00
Sleeve Length (C)	62.00	63.00	64.00	65.00	67.00



COLORS:

Orange/Navy