

SO02103 SOL'S BRODY WOMEN - HERRINGBONE SHIRT



MAIN FEATURES

- 125 g/m<sup>2</sup>
- Quality**  
82% cotton - 18% polyester  
Yarn-dyed
- Style**  
Close-fitting cut  
Long sleeves  
Classic collar  
1-button round cuffs  
7-button placket  
Buttoned bound slits  
Chest and back darts  
Textured fabric
- Suggested Decoration:**  
Digital printing (DTF), Embroidery, Flex, Heat transfer, Screen printing
- Certifications:**



**Country Of Origin:**  
Bangladesh



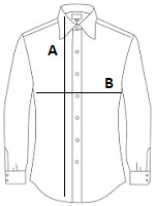
2025 : p. 130

2024 : p. 330



SIZE SPECIFICATION (CM)

	XS	S	M	L	XL	2XL
Pcs./📦	20	20	20	20	20	20
Body Length (A)	67	68	69	70	71	72
Chest Width (B)	44.50	46.50	48.50	50.50	53	56



COLORS:

- ☒ Sky Blue
- ☐ White