

WK450 UNISEX 3-LAYER TWO-TONE BIONIC SOFTSHELL JACKET**MAIN FEATURES**

- 300 g/m²
- 96% polyester/4% elastane
- 3-layer bonded fabric breathable 3,000 g/m²/24 h and waterproof 5,000 mm
- Outer: 96% polyester/4% elastane
- Breathable and waterproof membrane mid layer
- Inner layer: microfleece
- BIONIC FINISH ® ECO treatment (fluorine-free waterproofing for optimal performance)
- Plastic zip fastening with matching zip puller
- 2 zipped pockets with front zip puller
- 3-part hood adjustable using stoppers inserted in the seam
- Contrasting inner taped neckline with hanging loop
- Elasticated pen holder with 3 compartments on the left sleeve
- Contrasting piping between the two-tone parts of the garment (body and sleeves, front and back)
- 2x2 ribbed cuffs and hem lined with elastane
- Tear-away brand label

Certifications:**Country Of Origin:**

Bangladesh

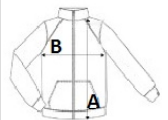


2025 : p. 267

2024 : p. 524

**SIZE SPECIFICATION (CM)**

	S	M	L	XL	2XL	3XL	4XL	5XL
Pcs./	10	10	10	10	10	10	10	10
Body Length (A)	71	73	75	77	79	81	83	85
Chest Width (B)	52	55	58	61	64	67	70	73
Sleeve Length (C)	67.50	68.50	69.50	70.50	71.50	72.50	73.50	74.50

**COLORS:**

Black	Black/Dark Grey	Black/Forest Green	Black/Orange	Black/Red	Black/Yellow
Navy	Navy/Dark Grey	Navy/Royal Blue			