

**WK504 UNISEX SHORT SLEEVE COTTON TUNIC****MAIN FEATURES**

- 180 g/m<sup>2</sup>
- 100% cotton
- Twill fabric
- Regular fit
- Crossed V-neck
- Patch chest pocket on the left-hand side
- 2 large patch pockets on the front
- 2 slits at the side
- Name tag inside the garment
- Tear-away brand label

**Certifications:****Country Of Origin:**

Pakistan

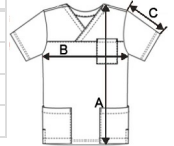


2026 : p. 289

2025 : p. 166

**SIZE SPECIFICATION (CM)**

	XS	S	M	L	XL	2XL	3XL	4XL	5XL
<b>Pcs./</b>	40	40	40	40	40	40	40	40	40
<b>Body Length (A)</b>	70	72	74	76	78	80	82	84	86
<b>Chest Width (B)</b>	51	54	57	60	63	66	69	72	75
<b>Sleeve Length (C)</b>	22.75	23.50	24.25	25	25.75	26.50	27.25	28	28.75

**COLORS:**
 White