

WK6147 UNISEX DUAL-FABRIC DAYTODAY JACKET (ex.KA6147)



MAIN FEATURES

- 250 g/m²
- EX KA6147
- 100% polyester
- 2 layer softshell, 4-way stretch fabric for greater comfort with fleece inner layer for more warmth on sleeves and shoulders to keep warm
- Front and back: 100 % polyester 75 gsm taffeta 230T with coating
- Water repellent treated fabric
- 2 zipped front pockets
- 1 fixed name label at inner left
- Contrasting piping at armholes and inside neck
- Front zip fastening and contrasting pockets
- Invisible zip at hem for decoration access
- Ideal for daily use

Suggested Decoration:

Embroidery

Certifications:



STANDARD 100

Country Of Origin:

China



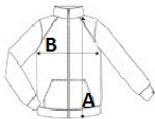
2025 : p. 350

2024 : p. 625



SIZE SPECIFICATION (CM)

| | XS | S | M | L | XL | 2XL | 3XL | 4XL | 5XL |
|-------------------|----|----|----|----|----|-----|-----|-----|-----|
| Pcs./ | 15 | 15 | 15 | 15 | 15 | 15 | 15 | 15 | 15 |
| Body Length (A) | 70 | 72 | 74 | 76 | 78 | 80 | 82 | 84 | 86 |
| Chest Width (B) | 49 | 52 | 55 | 58 | 61 | 64 | 67 | 70 | 73 |
| Sleeve Length (C) | 75 | 77 | 79 | 81 | 82 | 84 | 86 | 88 | 90 |



COLORS:

- Black/Kelly Green
- Black/Orange
- Black/Red
- Black/Silver
- Black/Yellow
- Navy/Light Royal blue
- Navy/Silver