

BCSMP21 B&C BLACK TIE LSL /MEN **Outlet**

## GLAVNE ZNAČAJKE

- 135 g/m<sup>2</sup>
- Stretch poplin
- 2-button cut-away collar
- Cross stitched mother-of-pearl effect buttons
- 2-button adjustable cuffs
  - a. Angular cuffs & square-shaped gauntlets
  - b. Additional cufflink buttonholes
- Short modern back yoke
- Inside lap seams for perfect finish
- Horizontal last buttonhole
- Square-shaped bottom hem side reinforcement
- Shorter length - can be worn untucked
- Curved bottom hem
- Darts at back panel

## Certifikati:

STANDARD  
100

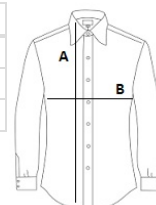
## Zemlja podrijetla:

Bangladesh



## SPECIFIKACIJA VELIČINE (CM)

|                    | S  | M    | L    | XL   | 2XL | 3XL | 4XL  |
|--------------------|----|------|------|------|-----|-----|------|
| Kom./📦             | 10 | 10   | 10   | 10   | 10  | 10  | 10   |
| Duljina tijela (A) | 73 | 74   | 76   | 78   | 79  | 81  | 82   |
| Širina prsa (B)    | 54 | 56,5 | 61,5 | 66,5 | 69  | 74  | 76,5 |



## BOJE:

Black
  Coffee Bean
  Luxurious Red
  White