

BCSMP22 B&C BLACK TIE SSL /MEN **Outlet**

### GLAVNE ZNAČAJKE

- 135 g/m<sup>2</sup>
- Stretch poplin
- Cut-away collar
- Cross stitched mother-of-pearl effect buttons
- Folded hem sleeves
- Short modern back yoke
- Inside lap seams for perfect finish
- Shorter length - can be worn untucked
- Curved bottom hem
- Darts at back panel

#### Certifikati:



STANDARD  
100

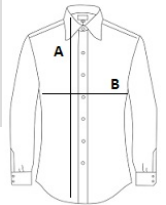
#### Zemlja podrijetla:

Bangladesh



### SPECIFIKACIJA VELIČINE (CM)

	S	M
Kom./📦	10	10
Duljina tijela (A)	73	74
Širina prsa (B)	36,5	37



### BOJE:

Luxurious Red  White