

PR691 'IVY' BEAUTY AND SPA TUNIC **Outlet**

## GLAVNE ZNAČAJKE

185 g/m<sup>2</sup>**Fabric**

100% Polyester plain weave

185gsm

**Features**

Beauty and Spa tunic with Panel detail

Black contrast panel detail around front neck line

Princess seams and bust darts for flattering fit

Side vents

Back zip fastening

Short sleeves

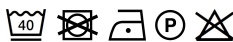
Easycare

**Predložena dekoracija:**

Embroidery, Heat transfer, Screen printing

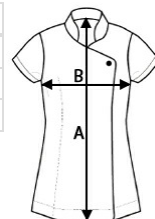
**Certifikati:****Zemlja podrijetla:**

China



## SPECIFIKACIJA VELIČINE (CM)

	XXS	XS	S	M	L	XL	2XL	3XL	4XL	5XL
<b>Kom./</b>	12	12	12	12	12	12	12	12	12	12
<b>Duljina tijela (A)</b>	70	71	72	72	73	74	75	76	77	78
<b>Širina prsa (B)</b>	44,5	47	49,5	52	54,5	57	60	63	66	69



## BOJE:

Black/Hot Pink
 Black/Purple
 Black/Strawberry Red
 Black/Turquoise