

PR682 'ORCHID' BEAUTY AND SPA TUNIC



MAIN FEATURES

185 g/m²**Fabric**

100% Polyester plain weave 185gsm

Features

Beauty and Spa tunic with Mandarin collar

Asymmetric button fastening to the front with eight 'bar' shaped buttons

Side vents

Back pleat for ease of movement

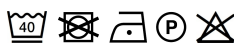
Princess seams

Suggested Decoration:

Embroidery, Heat transfer, Screen printing

Country Of Origin:

China

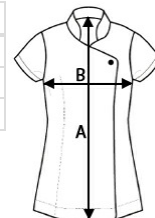


2025 : p. 154



SIZE SPECIFICATION (CM)

	XXS	XS	S	M	L	XL	2XL	3XL	4XL	5XL
Pcs./	12	12	12	12	12	12	12	12	12	12
Body Length (A)	70	71	72	72	73	74	75	76	77	78
Chest Width (B)	44,5	47	49,5	52	54,5	57	60	63	66	68



COLORS:

☒ Aubergine

☐ Lime

☐ Sapphire

☐ Silver

☐ Hot Pink

☐ Turquoise

☐ White