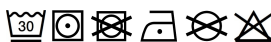


SD045 LUCY DENIM SHIRT**MAIN FEATURES**

- 155 g/m²
- 100% Cotton
- Standard fit
- No pockets for maximum embellishment area.
- Modern narrow collar
- Yoke at back shoulder
- Satin weave
- Button placket centre front fastening
- Turned hem with single needle stitch detail
- Single needle contrast at armholes collar and front placket
- 2 button placket at cuff

Country Of Origin:

Bangladesh



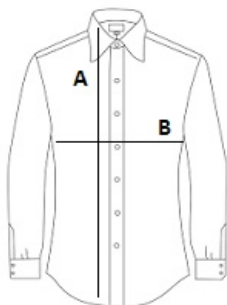
2024: p. 326

2023: p. 266

**SIZE SPECIFICATION (CM)**

Size Pcs./ Body Length (A) Chest Width (B) Sleeve Length (C)

Size	Pcs./	Body Length (A)	Chest Width (B)	Sleeve Length (C)
XS	24	68	45	62
S	24	70.50	49	63
M	24	73	53	64
L	24	75.50	57	65
XL	24	78	61	66

**COLORS:**

Black

Dark Blue

Light Blue