

SD047 ANNA KNITTED SHIRT **Outlet****MAIN FEATURES**

- 190 g/m<sup>2</sup>
- 95% Cotton/5% Elastane
- Fashion fit
- No pockets for maximum embellishment area
- Modern narrow collar
- Darts at back for close fit
- Yoke at back shoulder
- Micro Pique Knit
- Long sleeves
- Turned hem with single needle stitch detail
- Single needle contrast at armholes collar and front placket
- 2 button placket at cuff
- Twin needle stitching at side seams, sleeves and cuffs

**Suggested Decoration:**

DTG, Embroidery, Heat transfer, Screen printing

**Country Of Origin:**

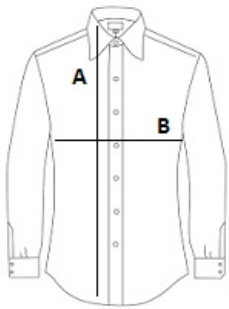
Bangladesh



2023: p. 266

**SIZE SPECIFICATION (CM)**

	<b>XS</b>	<b>S</b>	<b>M</b>	<b>L</b>	<b>XL</b>
<b>Pcs./</b>	24	24	24	24	24
<b>Body Length (A)</b>	64	66.50	69	71.50	74
<b>Chest Width (B)</b>	40.50	44.50	48.50	52.50	56.50
<b>Sleeve Length (C)</b>	58	59	60	61	62

**COLORS:**

Black
  Blue
  White