

**AAF397** WOMEN'S FLEX FLEECE CROPPED ZIP HOODED SWEATSHIRT**American Apparel®****MAIN FEATURES**

278 g/m<sup>2</sup>  
278.0 G/SqM  
50% Combed Cotton/ 50% Polyester  
Yarn Count 36/1  
Hooded with White finished polyester drawcord  
Metal zipper  
1x1 rib cuffs and bottom band  
Kangaroo pockets  
Side seam  
Double-satin razor label

**Suggested Decoration:**

Embroidery

**Country Of Origin:**

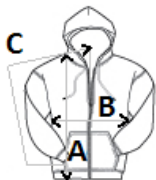
Honduras



2024: p. 398

**SIZE SPECIFICATION (CM)**

	<b>XS</b>	<b>S</b>	<b>M</b>	<b>L</b>
<b>Pcs./</b>	24	24	24	24
<b>Body Length (A)</b>	44	46	46	48
<b>Chest Width (B)</b>	39	42	45	47
<b>Sleeve Length (C)</b>	59	60	61	62

**COLORS:**

☒ Black ☒ Dark Heather Grey ☒ Navy ☐ White