

KA422 UNISEX 3-LAYER SOFTSHELL HOODED JACKET WITH REMOVABLE SLEEVES**KARIBAN****MAIN FEATURES**

- 300 g/m²
- 95% polyester/5% elastane
- 3-layer breathable bonded fabric
- 3,000 g/m²/24 h and waterproof 8,000 mm
- Outer: 95% polyester/5% elastane
- Breathable membrane mid layer
- Inner layer: microfleece
- Fabric facilitates printing
- Slim fit
- Zip fastening
- 2 zipped pockets on the front and 1 zipped pocket on the front right as worn
- Detachable hood with press studs and drawstring
- Sleeves detachable with a zip
- Twin needle finish at cuffs and hem

Country Of Origin:

Bangladesh

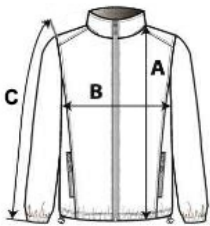


2025: p. 266

2024: p. 515

**SIZE SPECIFICATION (CM)**

| | XS | S | M | L | XL | 2XL | 3XL | 4XL | 5XL |
|--------------------------|-----------|----------|----------|----------|-----------|------------|------------|------------|------------|
| Pcs./ | 10 | 10 | 10 | 10 | 10 | 10 | 10 | 10 | 10 |
| Body Length (A) | 70.20 | 72.20 | 74.20 | 76.20 | 78.20 | 80.20 | 82.20 | 84.20 | 86.20 |
| Chest Width (B) | 49 | 52 | 55 | 58 | 61 | 64 | 67 | 70 | 73 |
| Sleeve Length (C) | 65 | 66 | 64 | 68 | 69 | 70 | 71 | 72 | 73 |

**COLORS:**

Black
 Camel
 Navy
 Red
 Titanium