

KA650 MEN'S HOODED SOFTSHELL LINED PARKA



KARIBAN

MAIN FEATURES

- 480 g/m²
- 95% polyester/5% elastane
- Triple-layer bonded fabric
- Breathable up to 3000 gsm/24h and water-resistant up to 8000 mm
- Breathable membrane mid layer
- Inner layer: microfleece
- 100 % polyester quilted lining
- Front: 4 zipped pockets (2 side, 1 sleeve, 1 right chest)
- 2 inner pockets with press studs
- Removable 3-panel hood, lined and quilted, adjustable with stoppers
- Adjustable cuff with tear release fastening
- 1 zip at chest and 1 zip at hem for decoration access

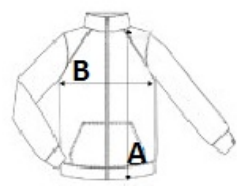
Country Of Origin:
China, Bangladesh

2025: p. 265
2024: p. 520



SIZE SPECIFICATION (CM)

	S	M	L	XL	2XL	3XL	4XL
Pcs./📦	10	10	10	10	10	10	10
Body Length (A)	72	74	76	78	80	82	84
Chest Width (B)	55	58	61	64	67	70	73
Sleeve Length (C)	66	67.50	69	70.50	72	73.50	75



COLORS:

- Black
- Navy
- Titanium