

PR317 WOMEN'S CROSS-DYE ROLL SLEEVE POPLIN BAR SHIRT Outlet



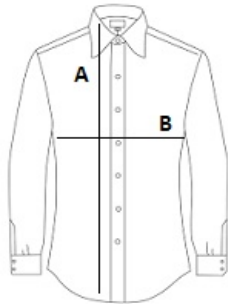
MAIN FEATURES

- 105 g/m<sup>2</sup>
- Fabric**
- 65% Polyester, 35% Cotton Poplin
- 105gsm
- Features**
- Soft collar styling
- Cross-dye textured fabric appearance
- Roll-up sleeve option with button fastening on the upper arm
- Bust and back darts
- Curved hem
- Suggested Decoration:**
- Embroidery, Heat transfer, Screen printing
- Country Of Origin:**
- Bangladesh



SIZE SPECIFICATION (CM)

	XS	S	M	L	XL	2XL	3XL
Pcs./📦	24	24	24	24	24	24	24
Body Length (A)	65	66	67	68	69	70	71
Chest Width (B)	46	48.50	51	53.50	56	58.50	61



COLORS:

■ Grey Denim