

## PR322 WOMEN'S JEANS STITCH DENIM SHIRT



## MAIN FEATURES

155 g/m<sup>2</sup>**Fabric**

100% Cotton Ring-Spun Denim

155gsm

**Features**

Contrast stitch details

Two chest pockets

Buttoned cuff and buttoned sleeve guard

Curved hem

Modern fit

**Suggested Decoration:**

Embroidery, Heat transfer, Screen printing

**Country Of Origin:**

Bangladesh



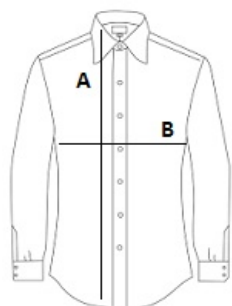
2025: p. 100

2024: p. 287



## SIZE SPECIFICATION (CM)

	XS	S	M	L	XL	2XL	3XL
<b>Pcs./</b>	24	24	24	24	24	24	24
<b>Body Length (A)</b>	65	66	67	68	69	70	71
<b>Chest Width (B)</b>	46	48.50	51	53.50	56	58.50	61
<b>Neckline length</b>	40	41.50	43	44.50	46	47.50	49



## COLORS:

 Black Denim
  Indigo Denim