

## SD045 LUCY DENIM SHIRT



## MAIN FEATURES

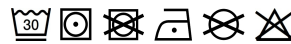
- 155 g/m<sup>2</sup>
- 100% Cotton
- Standard fit
- No pockets for maximum embellishment area.
- Modern narrow collar
- Yoke at back shoulder
- Satin weave
- Button placket centre front fastening
- Turned hem with single needle stitch detail
- Single needle contrast at armholes collar and front placket
- 2 button placket at cuff

## Certifications:



## Country Of Origin:

Bangladesh



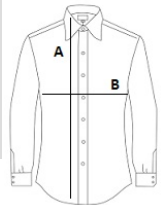
2025 : p. 122

2024 : p. 326



## SIZE SPECIFICATION (CM)

	XS	S	M	L	XL
Pcs./	24	24	24	24	24
Body Length (A)	68	70.50	73	75.50	78
Chest Width (B)	45	49	53	57	61
Sleeve Length (C)	62	63	64	65	66



## COLORS:

Black
  Dark Blue
  Light Blue