

WK4001 SET-IN SLEEVE SWEATSHIRT (ex.KA4001)



MAIN FEATURES

- 300 g/m<sup>2</sup>
- EX KA4001
- 80% cotton/20% polyester
- 3-thread fleece with LSF (Low Shrinkage Fleece) treatment
- Washable at 60°C
- Ribbed crew neck and cuffs
- Invisible zipped pocket on right-hand side
- Backing at shoulders and elbows for added resistance
- Pen holder on left sleeve
- Half-moon finish at back
- Hanging loop at neck
- Twin needle finishing at hem
- Longer back for added comfort
- Certified STANDARD 100 by OEKO-TEX® N° CQ 1007/7, IFTH

Suggested Decoration:

Embroidery

Country Of Origin:

Bangladesh



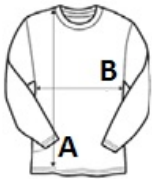
2025: p. 224

2024: p. 452



SIZE SPECIFICATION (CM)

|                   | XS | S  | M  | L  | XL | 2XL | 3XL | 4XL | 5XL |
|-------------------|----|----|----|----|----|-----|-----|-----|-----|
| Pcs./📦            | 15 | 15 | 15 | 15 | 15 | 15  | 15  | 15  | 15  |
| Body Length (A)   | 68 | 70 | 72 | 74 | 76 | 78  | 80  | 82  | 84  |
| Chest Width (B)   | 50 | 53 | 56 | 59 | 62 | 65  | 68  | 71  | 74  |
| Sleeve Length (C) | 63 | 64 | 65 | 66 | 67 | 68  | 69  | 70  | 71  |



COLORS:

- Black
- Dark Grey
- Navy