

BCSMO01 B&C OXFORD LSL **Outlet****GLÓWNE CECHY**135 g/m²

Cotton rich polycotton Oxford fabric with Easy Care finish

Soft button-down collar

Cross stitched mother-of-pearl effect buttons (except Oxford Blue: mother-of-pearl effect white buttons)

2-button adjustable cuffs

a. Rounded cuffs & mitre-shaped gauntlets

b. Additional cufflink buttonholes

The exclusive B&C Tie-Fix®

Back yoke with 2 overstitched side pleats

Left chest pocket

Inside lap seams for perfect finish

Horizontal last buttonhole

Mitre-shaped bottom hem side reinforcement

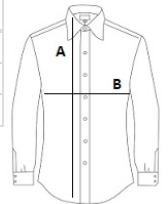
Curved bottom hem

Certyfikaty:STANDARD
100**Kraj pochodzenia:**

Bangladesh

**SPECYFIKACJA ROZMIARU (CM)**

	S	M	L	XL	5XL
Szt./📦	10	10	10	10	10
Długość całkowita (A)	80	81	83	85	90
Szerokość klatki piersiowej (B)	55,5	58	63	68	80,5

**KOLORY:**

Black
 Blue Chip
 Silver Moon
 White