

BCSMP21 B&C BLACK TIE LSL /MEN **Outlet****GLÓWNE CECHY**

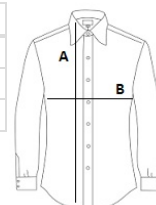
- 135 g/m<sup>2</sup>
- Stretch poplin
- 2-button cut-away collar
- Cross stitched mother-of-pearl effect buttons
- 2-button adjustable cuffs
  - a. Angular cuffs & square-shaped gauntlets
  - b. Additional cufflink buttonholes
- Short modern back yoke
- Inside lap seams for perfect finish
- Horizontal last buttonhole
- Square-shaped bottom hem side reinforcement
- Shorter length - can be worn untucked
- Curved bottom hem
- Darts at back panel

**Certyfikaty:**STANDARD  
100**Kraj pochodzenia:**

Bangladesh

**SPECYFIKACJA ROZMIARU (CM)**

	S	M	L	XL	2XL	3XL	4XL
Szt./📦	10	10	10	10	10	10	10
<b>Długość całkowita (A)</b>	73	74	76	78	79	81	82
<b>Szerokość klatki piersiowej (B)</b>	54	56,5	61,5	66,5	69	74	76,5

**KOLORY:**

Black
  Coffee Bean
  Luxurious Red
  White