

BCSWO03 B&C OXFORD LSL /WOMEN **Outlet****GLÓWNE CECHY**135 g/m²

Cotton rich polycotton Oxford fabric with Easy Care finish

Soft feminine collar

Cross stitched mother-of-pearl effect buttons (except Oxford Blue: mother-of-pearl effect white buttons)

2-button adjustable cuffs

a. Rounded cuffs

b. Additional cufflink buttonholes

Darts at bustline & back panel for a feminine shape

Horizontal last buttonhole

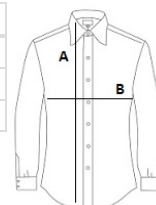
Curved bottom hem

Certyfikaty:STANDARD
100**Kraj pochodzenia:**

Bangladesh

**SPECYFIKACJA ROZMIARU (CM)**

	XS	S
Szt./	10	10
Długość całkowita (A)	65	66
Szerokość klatki piersiowej (B)	45,5	48

**KOLORY:**

Silver Moon