

120 g/m²

100% bawełna

Slim Fit

Washable at 40°C

GŁÓWNE CECHY:

Fine 100% cotton poplin with Easy Care finish

Soft feminine collar

Cross stitched mother-of-pearl effect buttons

2-button cuffs

a. Straight cuffs & thin square-shaped gauntlets

b. French cuff option

Darts at bustline & back panel for a feminine shape

Horizontal last buttonhole

Curved bottom hem



KOD CELNY: 62063000

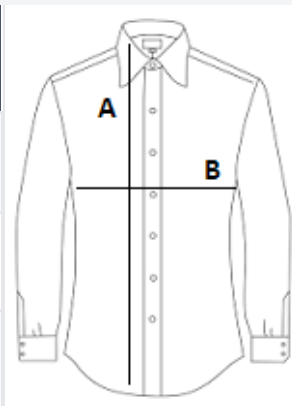
KRAJ POCHODZENIA

Bangladesh



SPECYFIKACJA ROZMIARU (CM)

| | XS | S | M | L | XL |
|---------------------------------|-------|-------|-------|-------|-------|
| Szt./☒ | 10 | 10 | 10 | 10 | 10 |
| Długość całkowita (A) | 65.00 | 66.00 | 67.00 | 68.00 | 69.00 |
| Szerokość klatki piersiowej (B) | 45,5 | 48.00 | 50,5 | 53.00 | 55,5 |



KOLORY:

 White

 Black

 Blue Chip