

**IB411 LADIES' BASIC SOFTSHELL JACKET** **Nowy**

**iDeal Basic**  
BRAND

**GŁÓWNE CECHY**

- 280 g/m<sup>2</sup>
- 95% polyester / 5% elastane
- 2-layer softshell with water-repellent treatment
- Inner layer: 100% black microfleece polyester
- Straight fit
- Two side pockets lined with polytricot, nylon zips and black zip pullers
- Black nylon zip fastening with chin guard and puller
- Shoulder and back yokes with topstitching
- Black inner neck tape
- Double-needle finish at sleeve and bottom hems
- Tear-away brand label

**Certyfikaty:**

**STANDARD**  
100

**Kraj pochodzenia:**

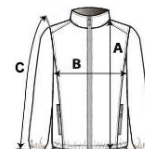
Bangladesh



2026 : s. 201


**SPECYFIKACJA ROZMIARU (CM)**

	XS	S	M	L	XL	2XL	3XL	4XL
Szt./📦	10	10	10	10	10	10	10	10
<b>Długość całkowita (A)</b>	61.75	63.75	65.75	67.75	69.75	71.75	73.75	75.75
<b>Szerokość klatki piersiowej (B)</b>	44	47	50	53	56	59	62	65
<b>Długość rękawa (C)</b>	61.50	62.50	63.50	64.50	65.50	66.50	67.50	68.50


**KOLORY:**
 Ideal Black
 Ideal Dark Grey
 Ideal Navy
 Ideal Red
 Ideal Royal Blue