

LS19001 HEAVYWEIGHT PULLOVER HOODIE **Nowy**

LANE SEVEN
GŁÓWNE CECHY340 g/m²**Fabrication**

3-End Fleece

10 oz (340 GSM)

70% Cotton, 30% Recycled Polyester

Features

100% combed cotton face yarn

Three panel hood with fleece lining for extra comfort

Double-needle topstitch on all seams

Dyed-to-match drawcords with knotted ends and metal eyelets

Kangaroo pocket

Ribbed cuffs and waistband

Tear away tags

Under 5% shrinkage

Sugerowana znakowania:

Druk cyfrowy (DTF), DTG, Haft komputerowy, Sitodruk

Kraj pochodzenia:

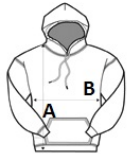
Pakistan











2026 : s. 178

**SPECYFIKACJA ROZMIARU (CM)**

	XS	S	M	L	XL	2XL	3XL
Szt./📦	24	24	24	24	24	24	24
Długość całkowita (A)	69.85	72.39	74.93	77.47	80.01	82.55	85.09
Szerokość klatki piersiowej (B)	52.07	53.34	58.42	62.23	67.31	69.85	72.39

**KOLORY:**

 Black	 Heather Grey	 Mushroom	 Navy Blue	 Sage	 Storm
 Teal	 White				