

REGATTA
PROFESSIONAL

THERMO GUARD

EXTOL STRETCH

235 g/m²

Poliester/elastan

Kieszeń

Odrywana etykieta

2026 : s. 419

GŁÓWNE CECHY:

Fabric Information

Polyamide Body Panels

90% Polyester

10% Elastane Power Stretch

Special Features

Polyamide panels to the body (235 G/SqM)

Lightweight recycled warmloft fill

Durable WR finish

Power stretch hood, sleeves and side of the body provides comfort and ease of movement (37 G/SqM)

Ideal for decoration with strategically placed baffles

Running in several colours as part of our new Navigate range

2 lower front zipped pockets

Zipped chest pocket



KOD CELNY: 62014010

SUGEROWANA ZNAKOWANIA

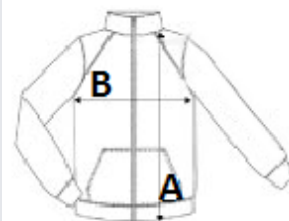
Prasa termiczna, Sitodruk

KRAJ POCHODZENIA

Myanmar

SPECYFIKACJA ROZMIARU (CM)

	S	M	L	XL	2XL	3XL
Szt./📦	8	8	8	8	8	8
Długość całkowita (A)	68,5	71.00	73,5	73,5	76.00	78,5
Szerokość klatki piersiowej (B)	50.00	54.00	58.00	62.00	67.00	75.00



KOLORY:

Black/Classic Red

Black/Lime Green

Black/New Royal

Black/Orange Pop

Black/Seal Grey

Navy/French Blue

Navy/Seal Grey