

REGATTA
PROFESSIONAL

SYMMETRY

280 g/m²

100% poliester

Pełny zamek błyskawiczny

Washable at 40°C

2026 : s. 185

GŁÓWNE CECHY:

Fabric Information

280 series anti-pill Symmetry fleece

Special Features

Interactive

Fleece cuffs

2 zipped lower pockets

Adjustable shockcord hem

May have slight color differences between Glowlight coloured products



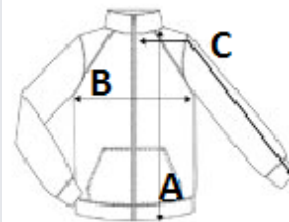
KOD CELNY: 61023090

KRAJ POCHODZENIA

Bangladesh

SPECYFIKACJA ROZMIARU (CM)

| | XXS | XS | S | M | L | XL | 2XL | 3XL | 4XL | 5XL | 6XL |
|---------------------------------|------|-------|-------|-------|-------|-------|-------|-------|-------|-------|------|
| Szt./📦 | 16 | 16 | 16 | 16 | 16 | 16 | 16 | 16 | 16 | 16 | 16 |
| Długość całkowita (A) | 0.00 | 67.00 | 69.00 | 71.00 | 74.00 | 74.00 | 76.00 | 76.00 | 78.00 | 78.00 | 0.00 |
| Szerokość klatki piersiowej (B) | 0.00 | 55.00 | 57.00 | 60.00 | 62.00 | 65.00 | 69.00 | 72.00 | 74.00 | 76.00 | 0.00 |
| Długość rękawa (C) | 0.00 | 75.00 | 77.00 | 79.00 | 80.00 | 81.00 | 83.00 | 84.00 | 85.00 | 86.00 | 0.00 |



KOLORY:

■ Black

■ Classic Red

■ Bordeaux

■ Royal Blue

■ Dark Navy

■ Seal Grey

■ Bottle Green

■ Glowlight