

SOL'S®  
the fair spirit

280 g/m<sup>2</sup>

Recycled polyester

Rurowy

Odrywana etykieta

Washable at 40°C

## GŁÓWNE CECHY:

Quality - Brushed fleece 280

80% cotton - 20% GRS certified recycled polyester

Style - Set-in sleeves

1x1 ribbed cuffs and bottom

Kangaroo pocket

Lined hood with tone-on-tone drawstring and metal eyelets

Tubular XS-XL, Sideseamed 2XL-4XL

Outstanding size tolerance: +10%

For the side-seamed version [click here!](#)

KOD CELNY: 61102099

KRAJ POCHODZENIA

Pakistan

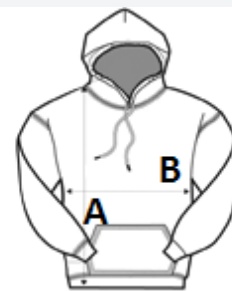
amfori BSCI



ATA-APPROVED  
VEGAN

## SPECYFIKACJA ROZMIARU (CM)

	XS	S	M	L	XL	2XL	3XL	4XL
Szt./☐	25	25	25	25	25	25	25	25
Długość całkowita (A)	69.00	72.00	73.00	75.00	76.00	78.00	80.00	82.00
Szerokość klatki piersiowej (B)	50.00	53.00	56.00	61.00	65.00	68.00	71.00	75.00



## KOLORY:

☐ White

■ Black

■ Burgundy

■ Lilac

■ Creamy Blue

■ French Navy

■ Royal Blue

■ Creamy Pink

■ Army

■ Bottle Green

■ Creamy Green

■ Light Yellow

Tubular cut / Körkötött fazon