

RETRA529 TOURER HYBRID JACKET **Outlet**REGATTA  
PROFESSIONAL

WARMLOFT

EXTOLSTRETCH



## CARACTERISTICI PRINCIPALE

37 g/m<sup>2</sup>**Fabric Information**

100% polyamide with water repellent and cire finish  
 Extol stretch side panels  
 Durable water repellent finish to body  
 Synthetic Warmloft down-touch water repellent insulation

**Special Features**

Easily compressible  
 Lightweight fill  
 Inner zip guard  
 2 zipped lower pockets  
 Stretch binding to hood opening, cuffs and hem  
 This product has no external logo branding  
 Made using recycled materials

**Sugestii de personalizare:**

Broderie, Transfer termic, Serigrafie

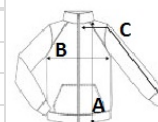
**Tara de origine:**

China



## SPECIFICAȚIE DIMENSIUNE (CM)

	S	M	2XL	3XL
Buc./🌀	8	8	8	8
Lungimea corpului (A)	73	73	78	78
Latimea pieptului (B)	50	54	67	71
Lungimea manecii (C)	67	68	71	72



## CULORI:

Seal Grey/Black