

135 g/m²

Pieptanat

Spalare la 60°C

CARACTERISTICI PRINCIPALE:

Cotton rich polycotton Oxford fabric with Easy Care finish

Soft button-down collar

Cross stitched mother-of-pearl effect buttons (except Oxford Blue: mother-of-pearl effect white buttons)

Short sleeves with narrow cuffs

The exclusive B&C Tie-Fix©

Back yoke with 2 overstitched side pleats

Left chest pocket

Inside lap seams for perfect finishing

Horizontal last buttonhole

Mitre-shaped bottom hem side reinforcement

Curved bottom hem



COD TARIFAR: 62052000

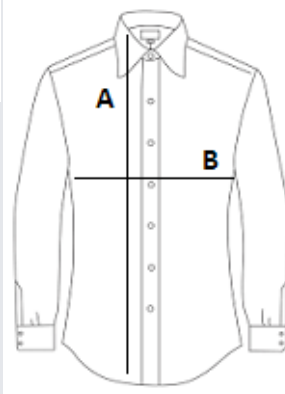
TARA DE ORIGINE

Bangladesh



SPECIFICAȚIE DIMENSIUNE (CM)

	S
Buc./	10
Lungimea corpului (A)	80.00
Latimea pieptului (B)	55,5



CULORI:

■ Blue Chip