

BCSMP22 B&C BLACK TIE SSL /MEN **Outlet****CARACTERISTICI PRINCIPALE**

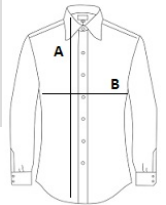
135 g/m<sup>2</sup>  
 Stretch poplin  
 Cut-away collar  
 Cross stitched mother-of-pearl effect buttons  
 Folded hem sleeves  
 Short modern back yoke  
 Inside lap seams for perfect finish  
 Shorter length - can be worn untucked  
 Curved bottom hem  
 Darts at back panel

**Certificări:**STANDARD  
100**Tara de origine:**

Bangladesh

**SPECIFICAȚIE DIMENSIUNE (CM)**

	<b>S</b>	<b>M</b>
<b>Buc./</b>	10	10
<b>Lungimea corpului (A)</b>	73	74
<b>Latimea pieptului (B)</b>	36,5	37

**CULORI:**

Luxurious Red  White