

115 g/m²

Poliester/Bumbac

Washable at 40°C

CARACTERISTICI PRINCIPALE:

Qualitative polycotton poplin with Easy Care finish

Cut-away collar

Cross stitched mother-of-pearl effect buttons

2-button adjustable cuffs

a. Angular cuffs

& square-shaped gauntlets

b. Additional cufflink buttonholes

Left chest pocket

Back yoke with 2 overstitched side pleats

Inside lap seams for perfect finish

Horizontal last buttonhole

Curved bottom hem



COD TARIFAR: 62052000

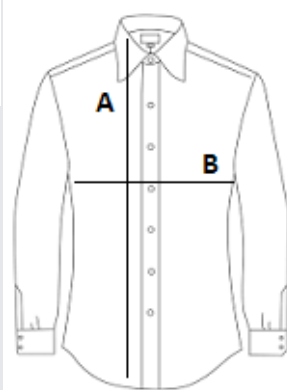


TARA DE ORIGINE

Bangladesh

SPECIFICAȚIE DIMENSIUNE (CM)

	S	M	L
Buc./☒	10	10	10
Lungimea corpului (A)	80.00	81.00	83.00
Latimea pieptului (B)	56.00	58,5	63,5



CULORI:

 Black

 Deep Red