

## KA6171 MEN'S BI-MATERIAL PADDED JACKET



## KARIBAN

## CARACTERISTICI PRINCIPALE

70 g/m<sup>2</sup>

Fabric sides, back, undersleeves and part of the neckline: 94% polyester / 6% elastane

Fabric upper sleeves, front and back: 100% polyester pongee 300T with polyurethane coating

100% polyester (120g) padding

Lined with 100% polyester taffeta 230T

Padded section on front body and third of back

Front fastening with reverse nylon zip

2 side pockets and front piping

Chest patch pocket on the left-hand side with reverse zip fastening

Bi-material yokes at the neckline

Elasticated bias finish on the cuffs and bottom hem

## Certificări:



## Tara de origine:

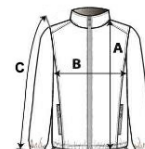
Bangladesh

2026 : 401. pag.



## SPECIFICAȚIE DIMENSIUNE (CM)

	S	M	L	XL	2XL	3XL
Buc./	10	10	10	10	10	10
Lungimea corpului (A)	69	71	73	75	77	79
Latimea pieptului (B)	52	55	58	61	64	67
Lungimea manecii (C)	65.50	66.50	67.50	68.50	69.50	70.50



## CULORI:

 Black/Dark Grey  
Heather