

195 g/m²

Poliester/Bumbac

Cu fermoar

Spalare la 60°C

CARACTERISTICI PRINCIPALE:

Fabric

65% Polyester, 35% Cotton Twill

195gsm

Features

V-Neck with contrast trims

Covered front zip fastening

Covered popper fastening above zip

Side and back pleats for fitted styling

Curved side pockets with contrast piped edge



COD TARIFAR: 62114310

SUGESTII DE PERSONALIZARE

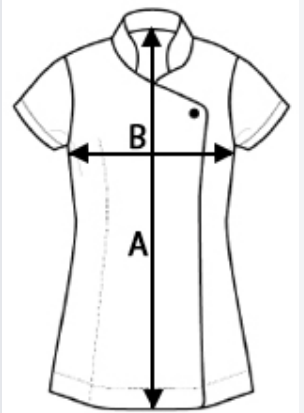
Broderie, Transfer termic, Serigrafie

TARA DE ORIGINE

Bangladesh

SPECIFICAȚIE DIMENSIUNE (CM)

	S
Buc./	24
Lungimea corpului (A)	78.50
Latimea pieptului (B)	48.00



CULORI:

Lilac/White