

REGATTA
PROFESSIONAL

THERMO GUARD

EXTOL STRETCH

235 g/m²

Poliester/Elastan

Buzunar

eticheta detasabila

2026 : 419. pag.

CARACTERISTICI PRINCIPALE:

Fabric Information

Polyamide Body Panels

90% Polyester

10% Elastane Power Stretch

Special Features

Polyamide panels to the body (235 G/SqM)

Lightweight recycled warmloft fill

Durable WR finish

Power stretch hood, sleeves and side of the body provides comfort and ease of movement (37 G/SqM)

Ideal for decoration with strategically placed baffles

Running in several colours as part of our new Navigate range

2 lower front zipped pockets

Zipped chest pocket



COD TARIFAR: 62014010

SUGESTII DE PERSONALIZARE

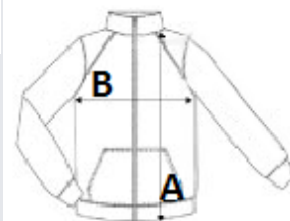
Transfer termic, Serigrafie

TARA DE ORIGINE

Myanmar

SPECIFICAȚIE DIMENSIUNE (CM)

	S	M	L	XL	2XL	3XL
Buc./☒	8	8	8	8	8	8
Lungimea corpului (A)	68,5	71.00	73,5	73,5	76.00	78,5
Latimea pieptului (B)	50.00	54.00	58.00	62.00	67.00	75.00



CULORI:

Navy/French Blue

Navy/Seal Grey

Black/Classic Red

Black/Lime Green

Black/New Royal

Black/Orange Pop

Black/Seal Grey